

# BLACK EARTH

## BLACK EARTH LYRIC

### HALLUCINATION THEORY

What I feel, I can't believe  
Is this real or hallu-scene?  
When I look back, I'll try to see  
What I've lost what could have been

Tear me up, I won't shout,  
I've given up and lost out  
All I see is eluding me  
I am on ecstasy

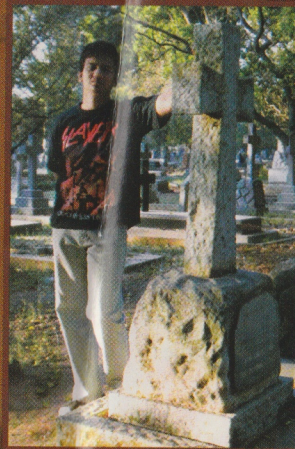
What I see is a memory  
Fading scenes of silent dreams  
It doesn't make sense to me  
Why am I even here?

It's this place in my head  
You know that I've been there  
I wanna go back again  
Can you take me there?

Take me far away, come release me  
Would you lie instead,  
That this could be the end  
At the edge I don't know,  
I'm tempted lets just go  
Now we're far away, come release me



Vikram Sekar

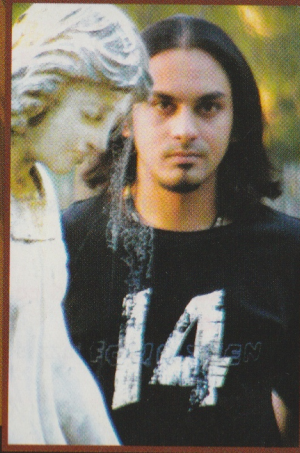


Subramani Ganesh

Bhaskar Shenoy



Jason Zachariah



Dennis Ostern

Photographs by **DARSHAN MANAKKAL**

Considering that every member of the band can boast of a **GET** rank that's higher than 500, you'd expect **Black Earth** to be the most cerebral outfit in the intellectual rockers circuit. We're not so sure about cerebral - the guys keep saying 'goodal' all the time. **Black Earth** is definitely not the coolest looking outfit in town, but they're easily one of the tightest bands we've heard in a while.

**Black Earth** was formed when geek gods Vicky and Subbu decided to get together and cover Metallica songs. But with wins at **KREC** Suratkal, Manipal Institute of Technology and Strawberry Fields, nobody's complaining about the invasion of the nerds.